

FILED

PLAN N° 670
For the improvement of

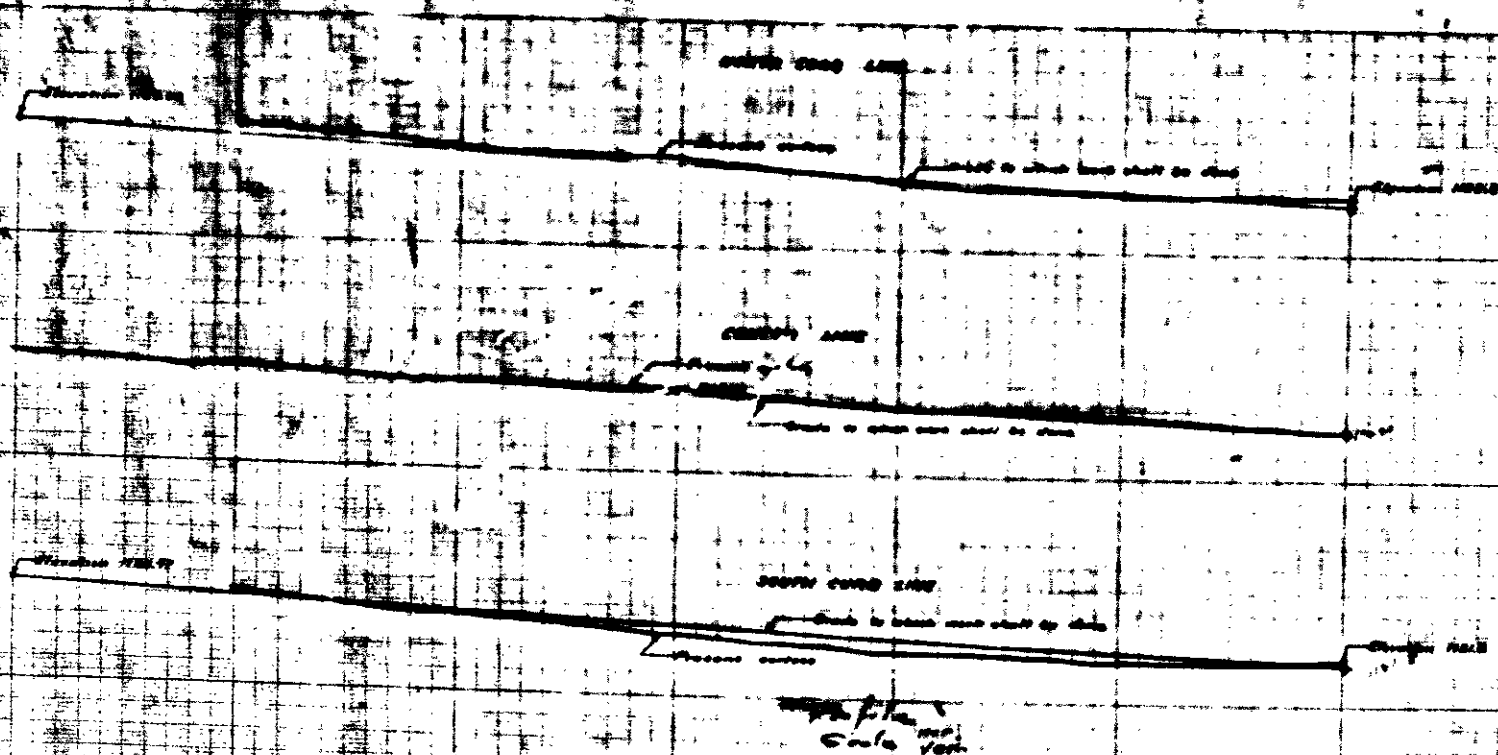
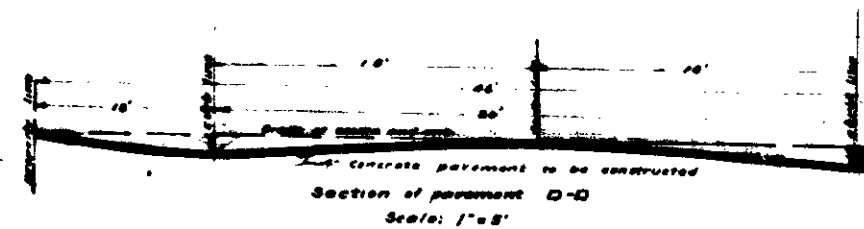
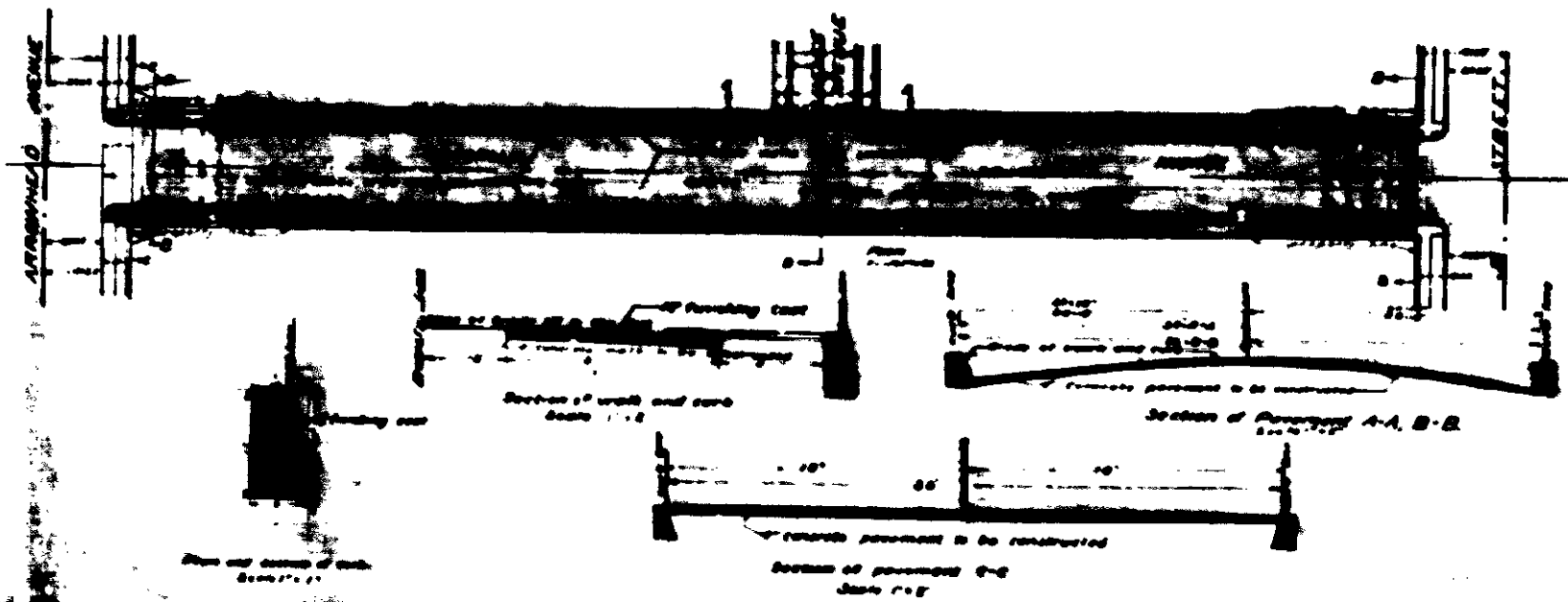
MAGNOLIA AVENUE

between
Arrowhead Avenue and "B" Street
In the City of San Bernardino, California.

July 11, 1924.

C. E. Johnson,
City Engineer

Scale 1"=40'



NOTES:
Black lines show present surface.
Red lines show grade to which work shall be done.

LEGEND:
1/2" = 10' means half an inch on the plan means 10 feet.
1/4" = 10' means quarter of an inch on the plan means 10 feet.
1/8" = 10' means eighth of an inch on the plan means 10 feet.
Concrete pavement to be constructed shown thus.
Concrete curb to be constructed shown thus.
Concrete curb in section shown thus.
Concrete walks to be constructed shown thus.
Concrete walks in section shown thus.

All elevations shown are in feet and inches.
A plus sign (+) shows the elevation above the City level.
A minus sign (-) shows the elevation below the City level.
The City level is established by reference to the City of San Bernardino, California.

FILED

PLAN N° 670
For the improvement of

MAGNOLIA AVENUE

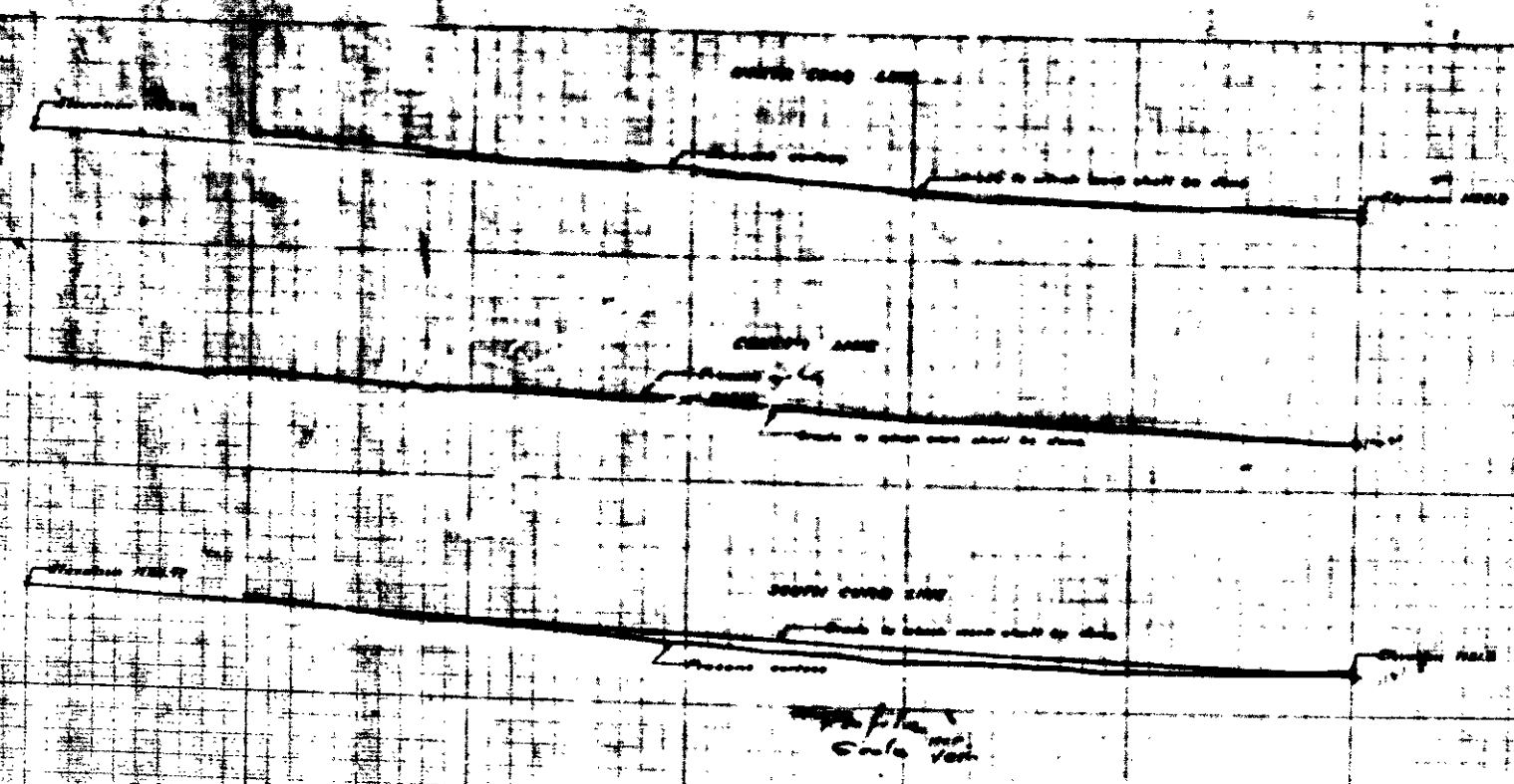
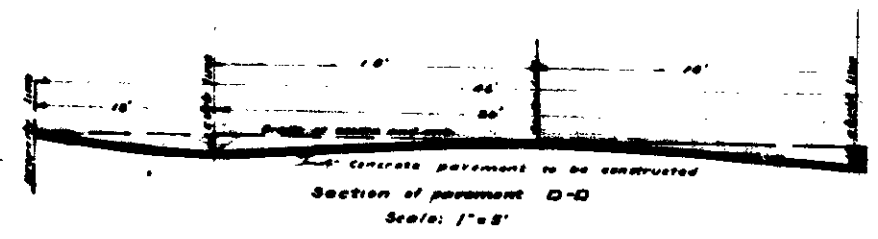
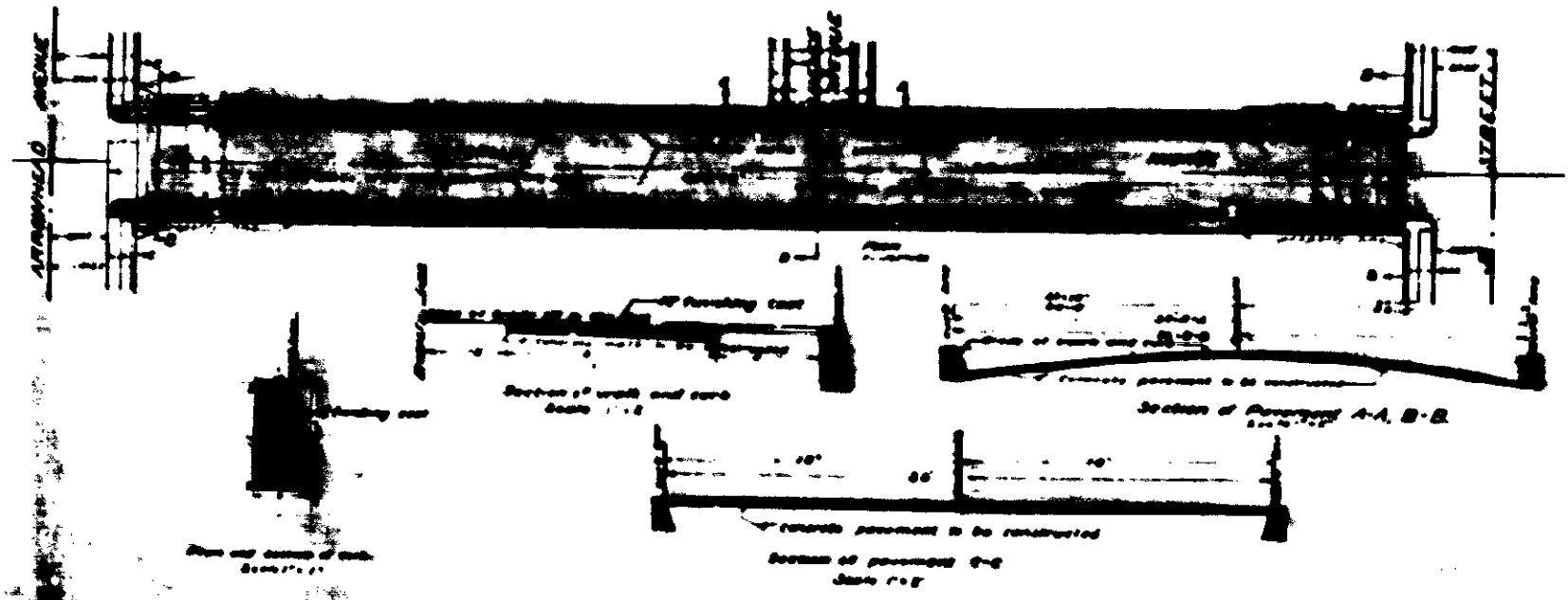
between
Arrowhead Avenue and "B" Street

In the City of San Bernardino, California

July 11, 1924.

C.E. Johnson,
City Engineer

Scale 1"=40'



Notes:
Black lines show present surface.
Red lines show grade to which work shall be done.

Legend:
 1" = 40' means 40 feet
 1" = 20' means 20 feet
 1" = 10' means 10 feet
 Concrete Pavement to be constructed shown thus
 Concrete Pavement in section shown thus
 Concrete Curb to be constructed shown thus
 Concrete Curb in section shown thus
 Concrete walks to be constructed shown thus
 Concrete walks in section shown thus.

All elevations shown are in feet and inches.
 A plus (+) sign is shown below the City Engineer's mark as established by ordinance No. 280 of the City of San Bernardino, California.